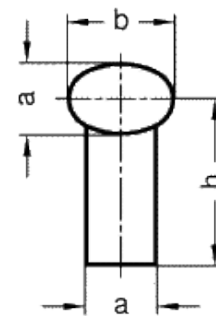
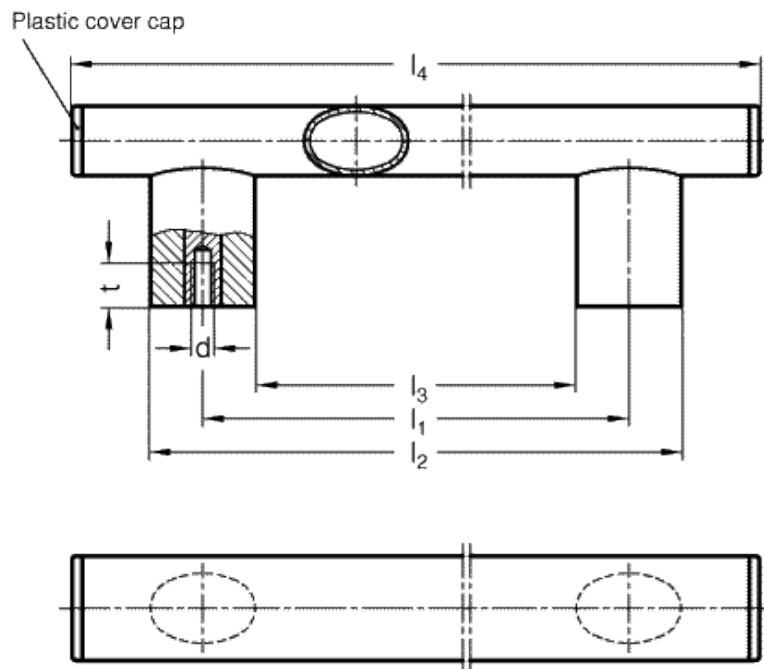


# GN 366

Oval tubular handles



## technical informations

### Tube

Aluminium, wall thickness 2 mm.

### Handle shanks

Polyamide based (PA) technpolymer, glas fibre reinforced, temperature resistant up to 100 °C.

### Tube end caps

Polyamide based (PA) technpolymer, glas fibre reinforced, temperature resistant up to 100 °C.

## Finish

- Version SW:

Tube: RAL 9005, black colour, matte finish, epoxy resin coating.

Handle shanks: black, matte finish.

Tube end caps: black, matte finish.

Version ELS:

Tube: anodised, natural colour.

Handle shanks: black, matte finish.

Tube end caps: black, matte finish.

- Version ELG:

Tube: anodised, natural colour.

Handle shanks: light grey, matte finish.

Tube end caps: light grey, matte finish.

## Assembly

Back mounting, zinc-plated steel threaded bushings.

### *Special executions on request (For sufficient quantities)*

Different lengths.

### *Features and applications*

Characteristics for the design of the GN 366 oval handles: tube and handle base made in the same elliptical profile.

Standard Elements	Main dimensions							Mounting holes		Weight
Description	b	$l_{1 \pm 0.5}$	a	h	$l_2$	$l_3$	$l_4$	d	$t_{min.}$	g
GN 366-36-M6-200-SW	36	200	24	57	236	164	290	M6	15	360
GN 366-36-M6-200-ELS	36	200	24	57	236	164	290	M6	15	360
GN 366-36-M6-200-ELG	36	200	24	57	236	164	290	M6	15	360
GN 366-36-M6-250-SW	36	250	24	57	286	214	340	M6	15	440
GN 366-36-M6-250-ELS	36	250	25	57	286	214	340	M6	15	440
GN 366-36-M6-250-ELG	36	250	24	57	286	214	340	M6	15	440
GN 366-36-M6-300-SW	36	300	24	57	336	264	390	M6	15	500
GN 366-36-M6-300-ELS	36	300	24	57	336	264	390	M6	15	500
GN 366-36-M6-300-ELG	36	300	24	57	336	264	390	M6	15	500
GN 366-36-M6-400-SW	36	400	24	57	436	364	490	M6	15	550
GN 366-36-M6-400-ELS	36	400	24	57	436	364	490	M6	15	550
GN 366-36-M6-400-ELG	36	400	24	57	436	364	490	M6	15	550
GN 366-36-M6-500-SW	36	500	24	57	536	464	590	M6	15	610
GN 366-36-M6-500-ELS	36	500	24	57	536	464	590	M6	15	610
GN 366-36-M6-500-ELG	36	500	24	57	536	464	590	M6	15	610
GN 366-36-M6-600-SW	36	600	24	57	636	564	690	M6	15	700
GN 366-36-M6-600-ELS	36	600	24	57	636	564	690	M6	15	700
GN 366-36-M6-600-ELG	36	600	24	57	636	564	690	M6	15	700
GN 366-36-M8-200-SW	36	200	24	57	236	164	290	M8	15	220
GN 366-36-M8-200-ELS	36	200	24	57	236	164	290	M8	15	220
GN 366-36-M8-200-ELG	36	200	24	57	236	164	290	M8	15	220
GN 366-36-M8-250-SW	36	250	24	57	286	214	340	M8	15	350
GN 366-36-M8-250-ELS	36	250	24	57	286	214	340	M8	15	350
GN 366-36-M8-250-ELG	36	250	24	57	286	214	340	M8	15	350

GN 366-36-M8-300-SW	36	300	24	57	336	264	390	M8	15	420
GN 366-36-M8-300-ELS	36	300	24	57	336	264	390	M8	15	420
GN 366-36-M8-300-ELG	36	300	24	57	336	264	390	M8	15	420
GN 366-36-M8-400-SW	36	400	24	57	436	364	490	M8	15	500
GN 366-36-M8-400-ELS	36	400	24	57	436	364	490	M8	15	500
GN 366-36-M8-400-ELG	36	400	24	57	436	364	490	M8	15	500
GN 366-36-M8-500-SW	36	500	24	57	536	464	590	M8	15	610
GN 366-36-M8-500-ELS	36	500	24	57	536	464	590	M8	15	610
GN 366-36-M8-500-ELG	36	500	24	57	536	464	590	M8	15	610
GN 366-36-M8-600-SW	36	600	24	57	636	564	690	M8	15	660
GN 366-36-M8-600-ELS	36	600	24	57	636	564	690	M8	15	660
GN 366-36-M8-600-ELG	36	600	24	57	636	564	690	M8	15	660



STANDARD MACHINE ELEMENTS WORLDWIDE