

## Stainless Steel-Levelling parts with captive spherical washer

### SPECIFICATION

Stainless Steel **NI**  
AISI 303  
Spherical washer  
Stainless Steel AISI 303  
Socket cap screw DIN 912  
Stainless Steel A2-70  
Washer DIN 433  
Stainless Steel AISI 304

### INFORMATION

Stainless Steel-Levelling parts GN 355.2 are used for levelling and adjustment in machines and equipment. They consist of a levelling screw, a socket cap screw with disk and a spherical washer. The levelling screw and spherical washer are permanently connected together. The external diameter of the spherical washer  $d_4$  is smaller than the thread core diameter  $d_1$ , thereby also making mounting possible when the seating is inaccessible. After making the adjustment using the assembly tools GN 355.1 available as an accessory, the screw is tightened firmly causing the levelling screw and the spherical washer to spread and is secured in this way against twisting in the threaded hole. The values for  $w$  and  $x$  given in the table and for the static load capacity are to be seen as reference values which may differ depending on the prevailing situation. In general, they do not constitute a warranty of condition. The user must determine whether the product is suitable for the intended purpose.

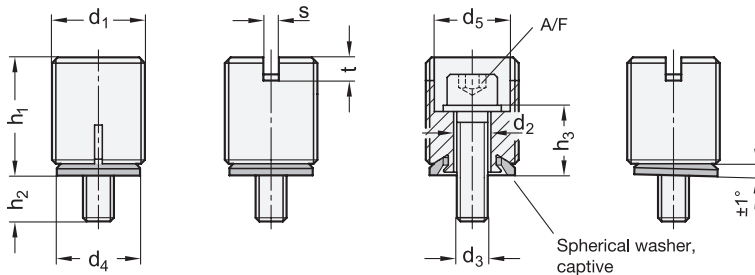


### ACCESSORY

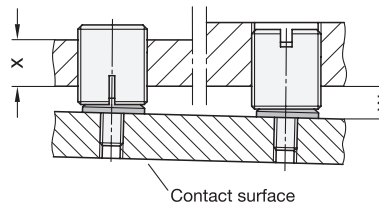
- Assembly tools GN 355.1 (Code no. see table)

### TECHNICAL INFORMATION

- Stainless Steel characteristics (see page A26)



### Application example



### STAINLESS STEEL

Description	$d_1$	$d_2$	$d_3$	$d_4$	$d_5$	$h_1$	$h_2$	$h_3$	$s$	A/F	$t$	$w$ max.	$x$ min.	Static load F in kN	Code no. assembly tool	
GN 355.2-M12x1-4,5-NI	M 12 x 1	4.5	M 4	10.5	9.1	19.4	10.6	9.4	2	3	3	8	8	4.4	GN 355.1-12	12
GN 355.2-M18x1-7-NI	M 18 x 1	7	M 6	16	12.6	27.3	9.6	15.4	2	5	3	13	12	10	GN 355.1-18	38
GN 355.2-M24x1,5-9-NI	M 24 x 1,5	9	M 8	21.5	19.6	30.1	12.3	17.7	4	6	6	16	16	27	GN 355.1-24	68